



NEWINGTON  
LONDON

2 Bedrooms

Apartment

Located in London

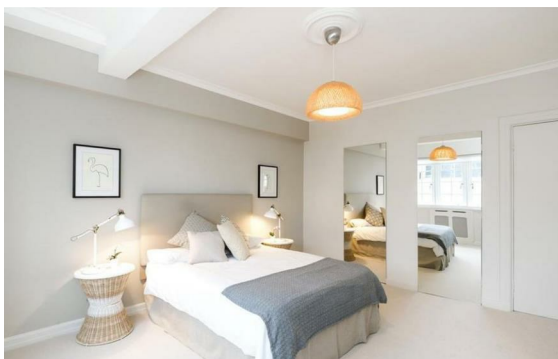
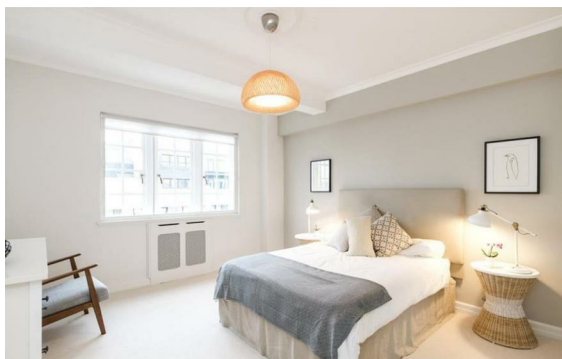
£925 Per Calendar



info@newingtonstates.com

<http://www.newingtonstates.com>

020 7724 2233



A wonderfully light, two-bedroom apartment situated within this purpose built block in Marylebone. The property benefits from a vast amount of natural light and comprises a large entrance hallway, a bright reception/dining room, separate kitchen, double bedroom with built-in storage and en-suite, a second double bedroom with built-in storage, and a further family bathroom.

Further benefits include lift access, ample storage wood floors in hallway and reception, fully equipped kitchen, communal hot water included in the rent and 24 hour porter. The apartment is within a prestigious Grade II listed building within easy walking distance of the amenities of Marylebone High Street as well as the open spaces of Regent's Park. EPC RATING: C

## Energy Efficiency Rating:

Agents Note: Whilst every care has been taken to prepare these particulars, they are for guidance purposes only. All measurements are approximate and are for general guidance purposes only and whilst every care has been taken to ensure their accuracy, they should not be relied upon and potential buyers/tenants are advised to recheck the measurements.

# NEWINGTON LONDON

60 Upper Montagu Street

London

W1H 1SN

020 7724 2233

[info@newingtonstates.com](mailto:info@newingtonstates.com)

<http://www.newingtonstates.com>